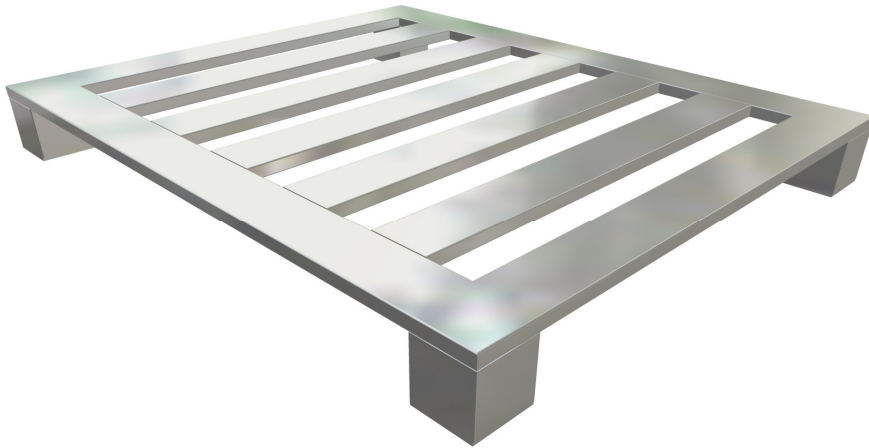


AplusPallets  
AplusPallets

Our Pallets are Proudly  
made in the U.S.A.



" If you can imagine it, we can build it"



100PLA916  
Standard Welds

40" x 48" 4-Way Big Block

Weight Approx. 34 lbs

6,000 Lbs. Static Capacity  
3,000 Lbs. Dynamic Capacity  
3,000 Lbs Racking Capacity

[4-Way Big Block ,Open Bottom Aluminum Pallet  
Spec. Sheet](#)

[Custom Sizes Available Upon Request](#)

Aluminum is a perfect solution to storage and warehouse needs! It won't rust ,rot ,warp ,or burn.

It doesn't sag under heavy loads up to 8 ton or more if needed .

The consistency of aluminum pallets make them the obvious choice for automated storage

and retrieval systems. Aluminum can be custom manufactured to your specifications.

Built for your application- no custom-mold cost, ever.

The Beauty of aluminum pallets is more then skin deep !

[Apluspallets.net](http://Apluspallets.net)  
Division of LMC ,LLC