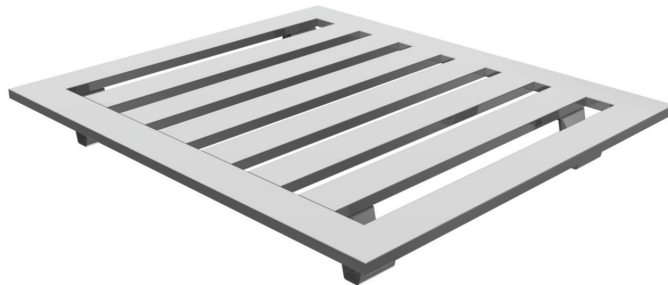




" If you can imagine it, we can build it"



100PLA1689
Standard Welds

40" x 48" 4-Way Fully Nestable

Weight Approx. 39 lbs

8,000 Lbs. Static Capacity
4,000 Lbs. Dynamic Capacity
4,000 Lbs Racking Capacity

[4-Way Fully Nestable Aluminum Pallet
Spec. Sheet](#)

[Custom Sizes Available Upon Request](#)

Aluminum is a perfect solution to storage and warehouse needs! It won't rust ,rot ,warp ,or burn.

It doesn't sag under heavy loads up to 8 ton or more if needed .

The consistency of aluminum pallets make them the obvious choice for automated storage
and retrieval systems. Aluminum can be custom manufactured to your specifications.

Built for your application- no custom-mold cost, ever.

The Beauty of aluminum pallets is more then skin deep !