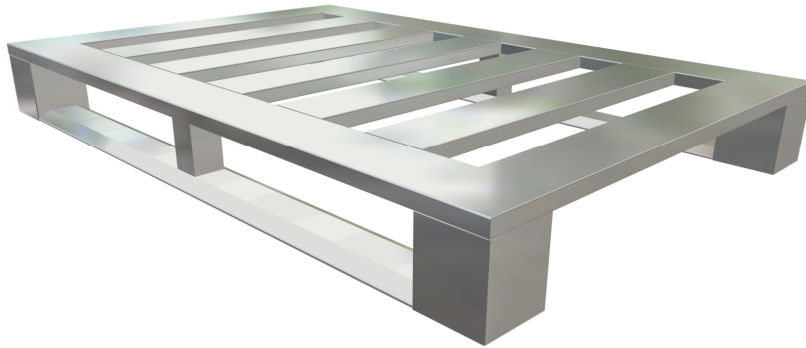


AplusPallets
AplusPallets

Our Pallets are Proudly
made in the U.S.A.



" If you can imagine it, we can build it"



100PLA1491
Standard Welds

32" x 48" 4-Way 2 runner

Weight Approx. 35 lbs

6,000 Lbs. Static Capacity
3,000 Lbs. Dynamic Capacity
3,000 Lbs. Racking Capacity
2,500 Lbs. Width Racking Capacity

[4-Way Lightweight Open Bottom Aluminum Pallet
Spec. Sheet](#)

[Custom Sizes Available Upon Request](#)

Aluminum is a perfect solution to storage and warehouse needs! It won't rust ,rot ,warp ,or burn.

It doesn't sag under heavy loads up to 8 ton or more if needed .

The consistency of aluminum pallets make them the obvious choice for automated storage

and retrieval systems. Aluminum can be custom manufactured to your specifications.

Built for your application- no custom-mold cost, ever.

The Beauty of aluminum pallets is more then skin deep !

Apluspallets.net
Division of LMC ,LLC